



Interest

N E W S L E T T E R

INTRODUCING:

Lifestyle Checking

NEW CHECKING ACCOUNTS TO FIT YOUR FINANCES.

With Lifestyle Checking, members will have a choice of three checking accounts with unique features to fit anyone's financial lifestyle. Choose Easy Checking with either Debit reward points or interest, E-Rewards Online Checking, or our exclusive Elite Checking. Find out more about the new checking accounts by visiting a branch, or log on to www.weberstatecu.com.

EASY CHECKING

- › FIRST SET OF CHECKS FREE
- › NO MINIMUM BALANCES
- › FREE DEBIT CARD
- › COURTESY PAY AVAILABLE
- › **CHOOSE EITHER FREE DEBIT REWARDS OR INTEREST**

If you are looking for a simple and uncomplicated way to manage your finances, the Easy Checking account is perfect for you. With no transaction limits or minimum balance requirements, you can put your finances on autopilot. Easy Checking requires a \$50 initial deposit, and you have your choice of earning interest on balances over \$500, or earning Scorecard Reward points each time you sign for a purchase.

E-REWARDS CHECKING

- › 100% ELECTRONIC ACCOUNT
- › EXCEPTIONAL RATES ON BALANCES
- › ATM SURCHARGE REBATES
- › ONE FREE COURTESY PAY/ NSF REFUND A YEAR
- › FREE DEBIT CARD + REWARDS
- › **3.95% APY***

If you love big rewards from your checking account and complete your transactions exclusively with a Debit card, online, or at an ATM, this is the account for you. E-Rewards Checking pays an exceptional interest rate on balances up to \$25,000, includes one free Courtesy Pay/ NSF refund per year, and gives rebates on non-CO-OP ATM surcharges. E-Rewards members earn 3.95%* APY on balances from \$500 to \$25,000. E-Rewards Checking is a 100% electronic account, and to earn 3.95% APY, you must conduct at least 15 signature-based Debit card transactions per month, be enrolled in E-Statements, Log on to E-Branch at least twice per month, and have Direct Deposit to your account.

*Rate for July 2008. Subject to change monthly.

Elite CHECKING

- › HIGH INTEREST RATES (UP TO 2.50% APY*)
- › FREE CHECKS FOR LIFE
- › 0.15% DISCOUNT ON LOANS
- › ONE FREE COURTESY PAY/ NSF REFUND A YEAR
- › FREE DEBIT CARD + REWARDS

Our ultimate checking account for members who maintain a high balance in their account. With high interest rates and a host of other benefits like discounts on consumer loans and free checks for life, the Elite Checking account is second to none. Elite Checking requires a \$1,500 minimum balance and Direct Deposit to avoid monthly service charges.

*Rate for July 2008. Subject to change monthly.

STUDENT LOANS AT WSCU

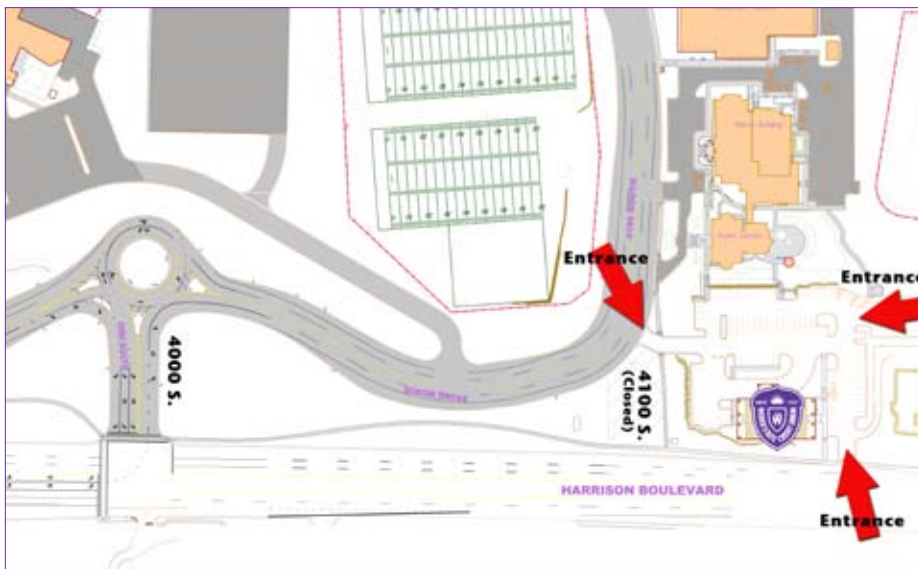
If you or one of your family members will be attending a college or university this fall, now is the perfect time to begin applying for financial aid. There are a variety of Student Loan options available to both students and their parents to help finance the tuition, books, housing, food, transportation and other expenses associated with higher education.

To download a free Student Loan guide, visit weberstatecu.com/StudentLoans.html for step-by-step instructions on how to obtain financing for education. Student Loan guides are also available in each of our branches. While completing your Student Loan application, don't forget to use lender code **829158** to select WSCU for your loan funding.

ROAD CLOSURE NEAR MAIN OFFICE

Weber State University is currently undergoing a realignment of the frontage road (Dixon drive) running parallel to Harrison Blvd. This project will help the University improve traffic flow and safety for everyone entering and exiting the campus.

Later this summer, UDOT will close the campus entrance at 4100 South to create additional University parking. Once this closure is made, members will not be able to enter the credit union parking lot by using 41st street as an entrance. Members will need to access the credit union via Country Hills Drive (east of the car wash), Harrison Boulevard, or by entering at 4000 South, then proceeding southward along Dixon drive.



KIDS CLUB DAY AT DINOSAUR PARK



Weber State Credit Union will be holding a Waldo's Club day at the Ogden-Eccles Dinosaur Park on Saturday, July 19th. All Kid's Club members will be mailed a coupon for free admission and a free lunch.

All children 11 years of age and under, with an account in their own name, are automatically enrolled in the Waldo's Savers Kids Club. Open your account today and join us for a fun day at the Dinosaur Park.

COMMUNITY INVOLVEMENT

Shred-it Day and Car Show - On April 21st, the credit union held its 4th Annual Shred-it day to provide free document shredding for the community. In conjunction with the event, a classic car show was held at the Main branch.

Arbor Day Foundation -As part of WSCU's ongoing commitment to the environment, a donation has been made to the Arbor Day Foundation to plant 536 new trees, one for each E-Statement enrollment from March 1st to April 30th.

Adopt-a-Highway - On May 31st, credit union employees donated their time to clean a beautiful stretch of Highway 39 in Huntsville.



Alumni Golf - WSCU was the Title Sponsor of the Weber State University Alumni Golf Classic held on June 13th. The tournament raised nearly \$10,000 in student scholarship funds during the event.

Relay for Life - On June 6th, credit union employees participated in the American Cancer Society's Relay for Life at the Weber State University football stadium. This annual event helps to raise money to fund cancer research.





FUEL YOUR SUMMER FUN WITH VISA PLATINUM

Have a VISA Platinum card? You could win 250 gallons of gas.

From June 16th through September 14th, every purchase you make on your VISA Platinum Rate Advantage, Rewards, or Cash-Back card will automatically enter you to win our weekly drawing of \$50 in free gas and the Grand Prize of 250 gallons of free gas. There are no sign-up forms or enrollments, and there is no limit to the number of entries you can make. The more you use your card, the better your chances of winning.

Don't have a VISA Platinum card yet?

If you haven't applied for a new VISA Platinum card yet, now is the perfect time. Now through September 14th, every approved VISA application will receive one entry into our weekly drawing for \$50 in free gas to help fuel your summer fun. To fill out a VISA Platinum application, stop by any of our branches, or submit your application online for fast and easy approval. Once you receive your new Platinum card, start using it right away to get into the grand prize drawing for 250 gallons.



SUMMER SKIP-A-PAYMENT

If you would like a little extra cash during the summer season try our summer Skip-a-Payment.

Just fill out the form and mail or deliver it to WSCU before July 25th and you can skip one or all of your loan payments for a month. Several loans are not eligible, such as VISA balances, delinquent loans, and loans less than 6 months old. Mortgages may be eligible, depending on circumstances. There is a small fee of \$30.00 that applies for each loan payment skipped.

SUMMER SKIP-A-PAYMENT

NAME _____ ACCOUNT # _____

PLEASE SKIP (SELECT ONE):

ALL JULY LOANS JULY _____ LOAN

ALL AUGUST LOANS AUGUST _____ LOAN

The loan payment due will be advanced one month to the loan(s) indicated above. This loan is paid monthly directly by me or automatically from my savings or checking account. I understand that interest will accrue at the normal rate and that the skipped payment will be deferred to the end of my loan. I also understand that this offer is valid only through Friday, July 25, 2008. Please sign (all co-signers must also sign to make the extension valid) and mail or deliver to WSCU. In the event of a claim, GAP insurance does not cover skipped payments.

X (co-signer) _____

X _____ X (co-signer) _____



**WEBER STATE
CREDIT UNION**

Rewarding Membership®

4140 Harrison Blvd
Ogden, UT 84408-4140

PRSR STD
US POSTAGE
PAID
Permit No. 3280
SLC, UT

INTRODUCING:

Lifestyle Checking

3 NEW CHECKING ACCOUNTS TO FIT YOUR FINANCES.

Look inside for details on our exciting new checking account lineup.



LOCATIONS AND HOURS

MAIN OFFICE

4140 Harrison Blvd.
Ogden, UT 84408
(801) 399-9728
1-888-978-9728

Office Hours:
Mon-Fri 9am-6pm
Drive-Up Service:
Mon-Fri 9am-6pm
Sat 9am-1pm

ROY BRANCH

5997 South 3500 West
Roy, UT 84067

Office Hours:
Mon-Fri 9am-6pm
Drive-Up Service:
Mon-Fri 9am-6pm
Sat 9am-1pm

NORTH BRANCH

1529 N. Washington Blvd.
Ogden, UT 84404

Office Hours:
Mon-Fri 9am-6pm

SHEPHERD UNION BRANCH

2106 University Circle
Ogden, UT 84408

Office Hours:
Mon-Fri 8am-4pm
Lunch 1:30pm-2pm

DAVIS T.L.C. BRANCH

915 West 1000 North
Layton, UT 84041

Drive-Through Only:
Mon-Thur 9am-5:30pm
Friday 9am-6pm
Lunch 1:30pm-2:30pm

ATM LOCATIONS

WEBER & DAVIS COUNTY

Main Branch
4140 Harrison Blvd. Ogden, UT
Shepherd Union
2106 University Circle Ogden, UT

Dee Events Center
4450 Harrison Blvd. Ogden, UT
Roy Branch
5997 S. 3500 W. Roy, UT

North Branch
1529 N. Washington Blvd. Ogden, UT
Ogden-Weber ATC
200 N. Washington Blvd. Ogden, UT

University Village
1321 East 4600 South Ogden, UT
Davis Campus
2750 University Park. Layton, UT

CO-OP NETWORK ATMS

25,000+ Surcharge free
CO-OP ATMs

Visit weberstatecu.com or
call 1-888-SITECOOP for a
complete listing of locations



COTTONWOOD CENTER

1963 East 4800 South
Holladay, UT 84117
(801) 272-6755

WEST VALLEY CENTER

3569 West 3500 South
West Valley, UT 84119
(801) 967-0069

WEST JORDAN CENTER

3078 West 7800 South #10
West Jordan, UT 84088
(801) 569-1799

SOUTH TOWNE CENTER

57 West 10600 South
Sandy, UT 84070
(801) 553-1282

ST. GEORGE CENTER

616 South River Rd.
St. George, UT 84790
(435) 656-5620

CU Service Center Hours:
Mon.-Fri. 9am-7pm, Sat. 9am-5pm

HOLIDAYS

WSCU will be closed to observe the following holidays:

Independence Day	Friday, July 4th
Pioneer Day	Thursday, July 24th
Labor Day	Monday, September 1st



**WEBER STATE
CREDIT UNION**
Rewarding Membership

